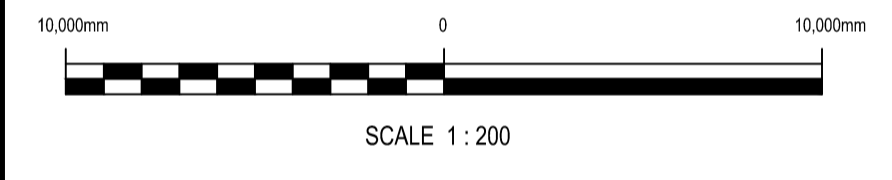


LEGEND

EXISTING FOUL SEWER	---
EXISTING STORM SEWER	- - -
EXISTING COMBINED SEWER	- - -
EXISTING OVERFLOW SEWER	—
EXISTING KERB LINE	---
RED LINE BOUNDARY	—
EXISTING GULLY	□ GY
NEW GULLY	□ G
NEW STORM SEWER CONNECTION	—
HYDRANT	□ FH



REV	DATE	DESCRIPTION	D	C	A
B	27.10.23	MINOR REVISIONS, REMOVAL OF BLUE TEXT	A.M.C.	D.R.	T.H.
A	06.10.23	FIRST ISSUE	A.M.C.	D.R.	T.H.

PROJECT No. 533272 STAGE PRELIMINARY

COPYRIGHT RESERVED - THIS DRAWING IS NOT TO BE USED FOR A PURPOSE OTHER THAN THAT FOR WHICH IT HAS BEEN ISSUED BY NICHOLAS O'DWYER LTD. NOR IS IT TO BE COPIED OR REPRODUCED IN ANY MANNER WITHOUT WRITTEN CONSENT.

NICHOLAS O'DWYER
an RSK company

15 Downshire Road,
Newry, BT34 1EE,
Northern Ireland
T +44 (0)28 3026 6915
E newry@nodwyer.com
W www.nodwyer.com

CLIENT
LOUTH COUNTY COUNCIL

PROJECT
WESTGATE 2040

TITLE
**DRAINAGE PLAN
SHEET 5 OF 6**

SCALES @ A1	DRAWN	CHECKED	APPROVED
1:200	P. McDONALD	D. REDDY	T. HOLOHAN
	DATE	DATE	DATE
	06.10.2023	06.10.2023	06.10.2023

SUITABILITY CODE	SUITABILITY DESCRIPTION
S1	PLANNING

DRAWING No.	REVISION
LOUX3001-P-000-405	B